

Implant placement + biomaterials + L-PRF + blue[®]m A 7 day follow up

Dr. Emilio Marquardt



- Studied Dentistry at the University de Varzea Grande
- Specialised in Oral and maxillofacial surgery and traumatology
- Professor at the University and lecturer of many courses
- On call for surgery at the Hospital Pronto-Socorro de Cuiaba
- Member of Hospital Santa Rosa de Cuiaba

Implant placement + biomaterials + L-PRF + blue[®]m A 7 day follow up



- Patient 42 years old
- Lost her front teeth 20 years ago
- Resulted in a defect in the anterior region of the maxilla, loss of height and width



- Patient was put under general anaesthetic
- Incision from canine to pre-molar was made

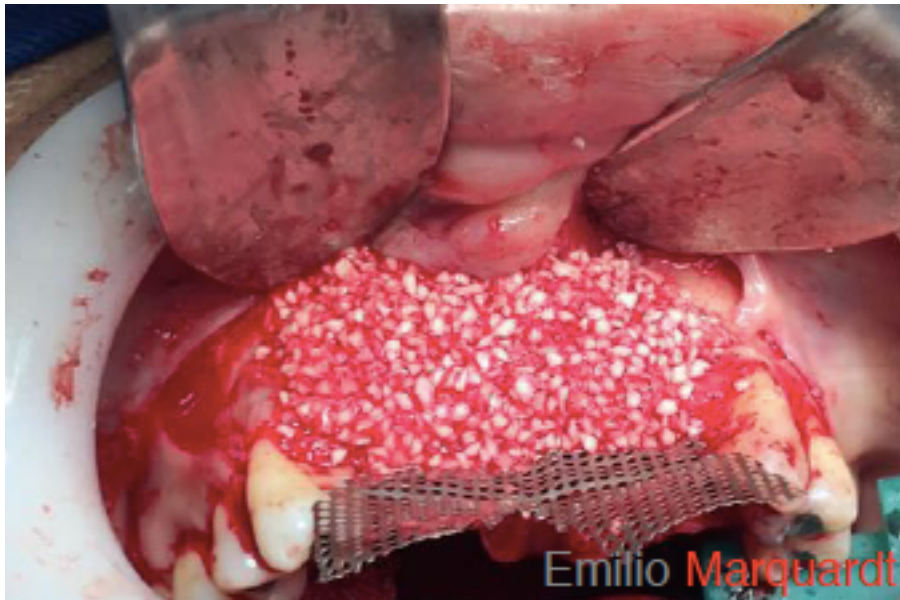


- Bone was prepared by making micro holes in it
- blue[®]m oral gel was put in for 5 minutes

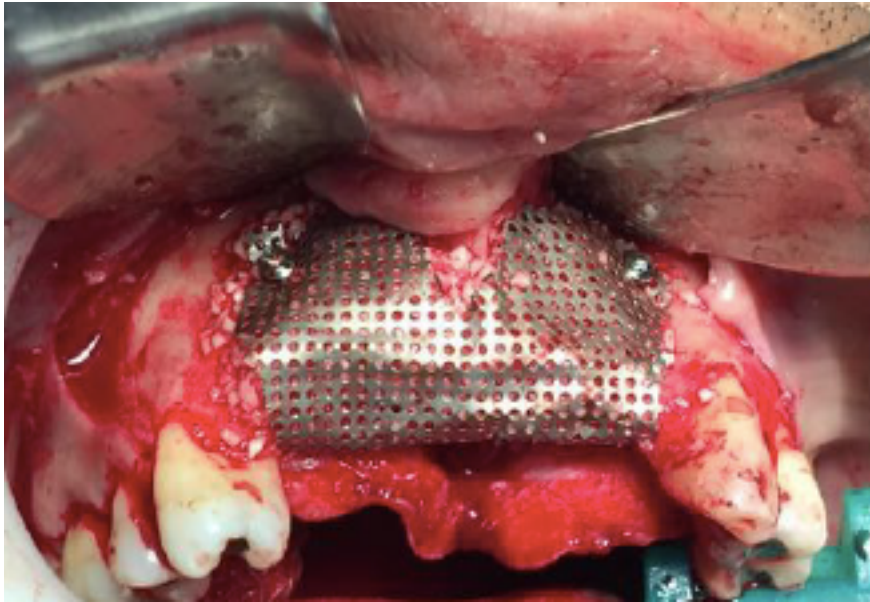




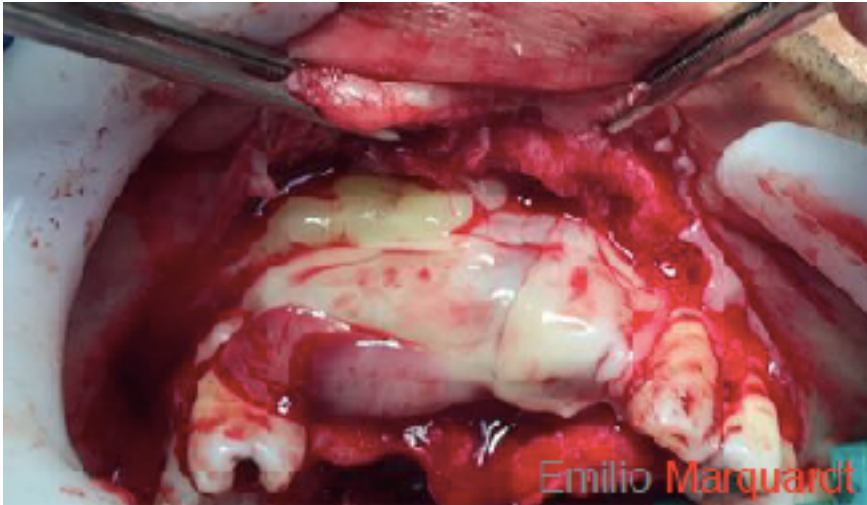
- Removed the oral gel with a physiological saline solution 0,9%
- Placed the implant and bone grafting material with Platelet Rich Fibrin derived from the patients



- Over the Platelet Rich Fibrin derived from the patients blood another biomaterial (Bonefill Porous from Bionnovation) was placed



- A titanium membrane was placed and fixed with screws



- Covered with a L-PRF membrane

Implant placement + biomaterials + L-PRF + blue[®]m A 7 day follow up



- Sutured with monocryl 4.0



- Applied blue[®]m oral gel directly after surgery and held there for 20 minutes



7 days post-operative



- Patient was instructed to brush with blue[®]m toothpaste and to rinse with the blue[®]m mouthwash 3 times a day for 2 minutes
- Patient was instructed to use the blue[®]m oral gel 2 times a day for better wound healing



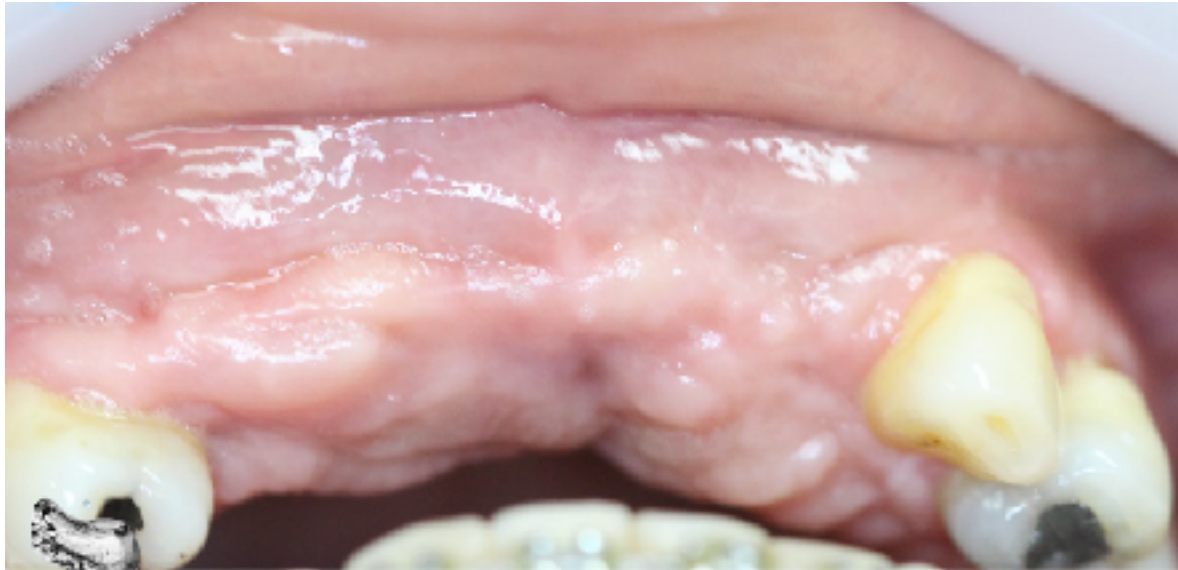
- Patient started using chlorhexidine 0,12% for 1 day and complaint about acute pain in the region
- Clinical examination shows deficiency in the healing process, edema and flaccidity of the gingiva



- Patient had to stop using chlorhexedine and start again with the blue[®]m oral gel for better wound healing
- Good results were seen after 24 hours



Implant placement + biomaterials + L-PRF + blue[®]m A 7 day follow up



6 months post-operative