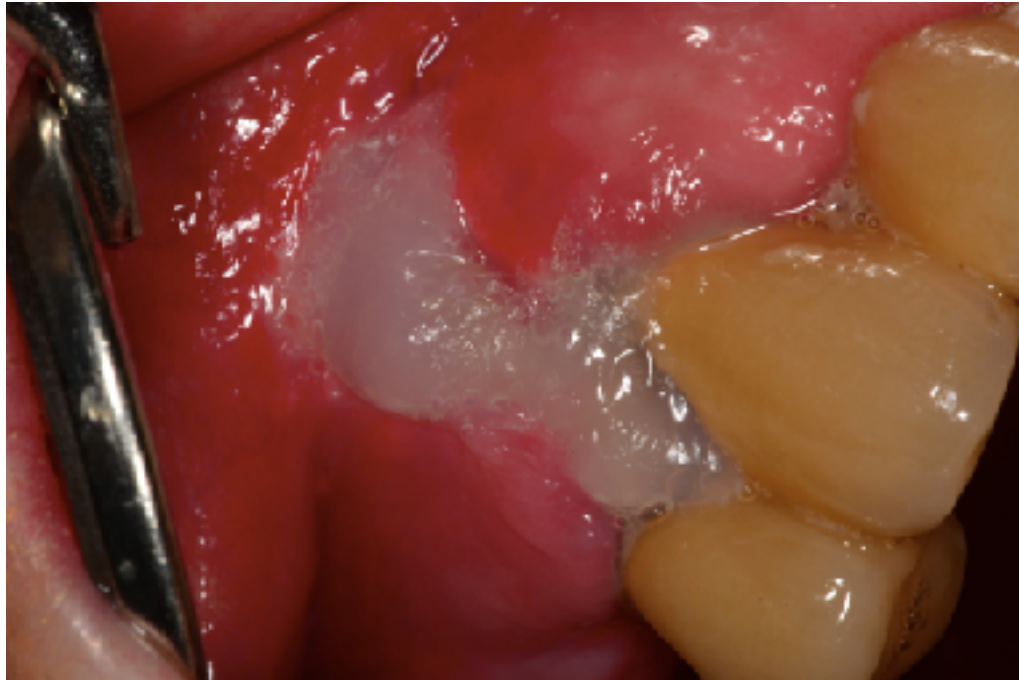


blue[®]m, for the protection of injured periodontal tissue

Woundhealing problem after apex resection



blue[®]m, for the protection of injured periodontal tissue



Applying blue[®]m oral gel

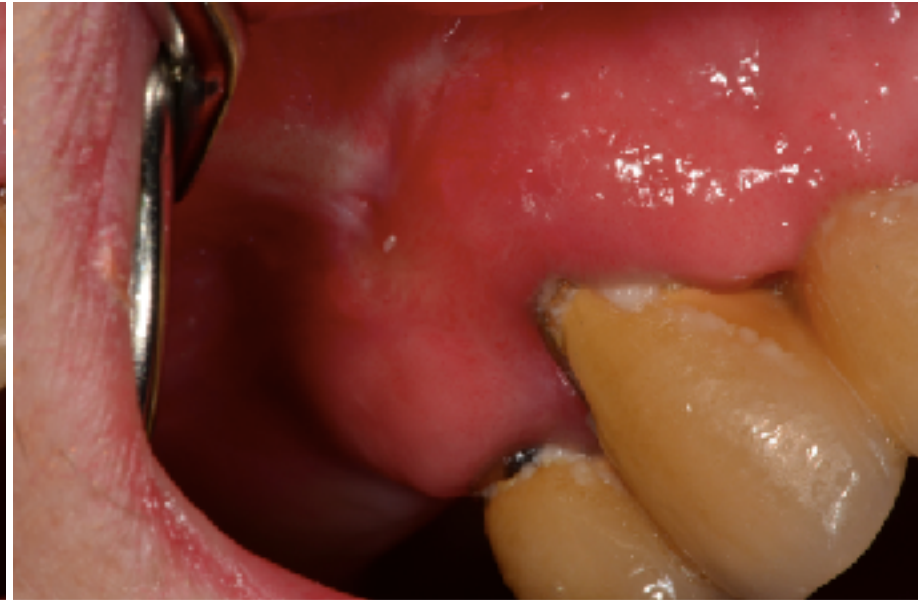


blue[®]m, for the protection of injured periodontal tissue

Woundhealing problem after apex resection



4 days of applying blue[®]m



17 days of applying blue[®]m