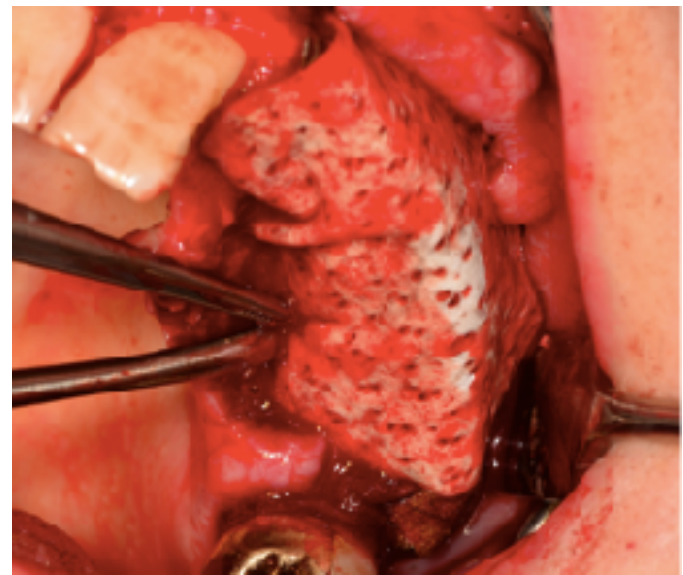
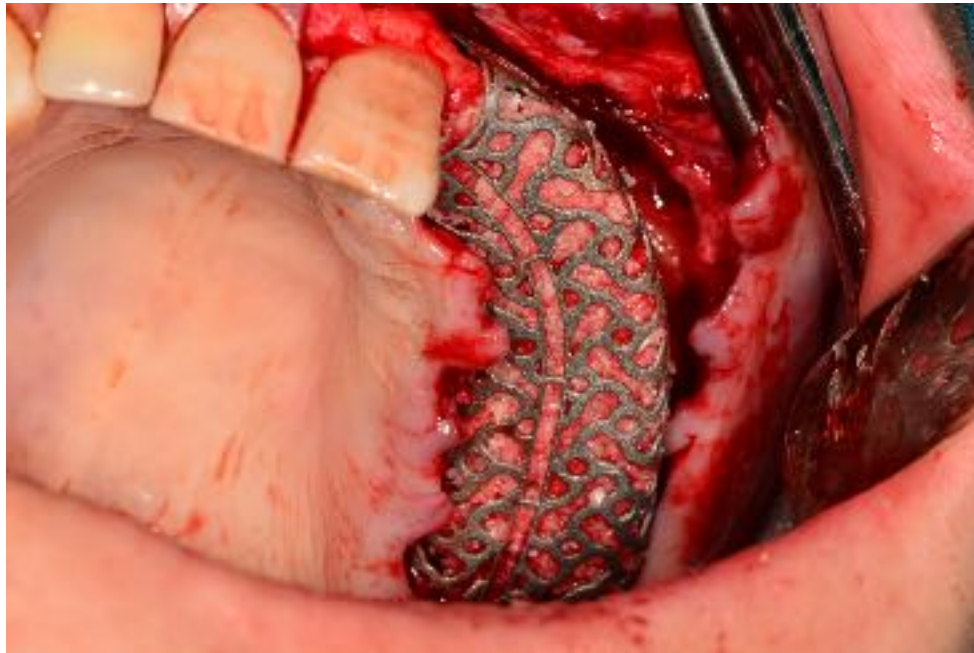


blue[®]m, for the protection of injured periodontal tissue

Guided tissue regeneration Pat B.W



blue[®]m, for the protection of injured periodontal tissue



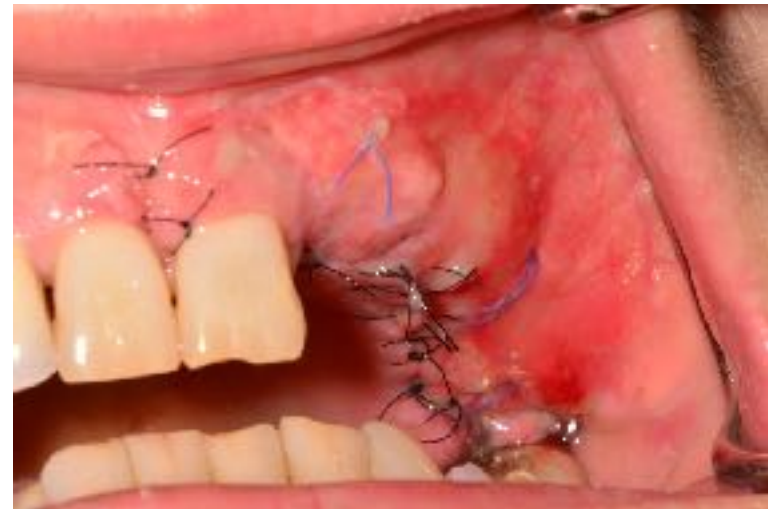
During surgery

blue[®]m, for the protection of injured periodontal tissue



Applying blue[®]m oral gel during surgery

blue[®]m, for the protection of injured periodontal tissue



1 day postoperative

blue[®]m, for the protection of injured periodontal tissue



5 days postoperative

blue[®]m, for the protection of injured periodontal tissue



Wound directly after surgery



Wound after 5 days blue[®]m
oral gel